

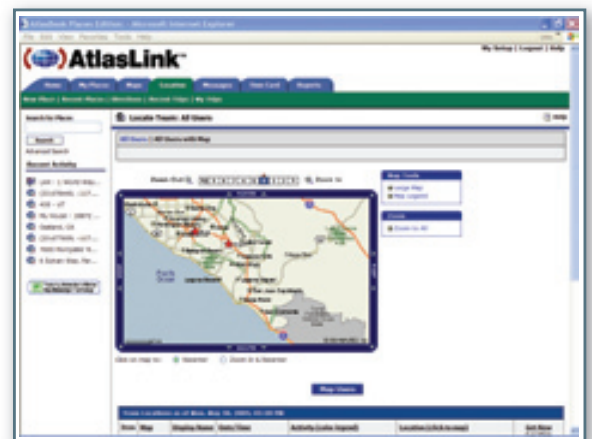
# AtlasLink<sup>TM</sup>

AtlasLink is a mobile workforce management solution that provides visibility into field activity and exchange of relevant data. AtlasLink lets people in the field share their latest location information, send SMS messages, and record timesheets, while users back at headquarters can use a web application to monitor and communicate with their team. AtlasLink offers the power and flexibility to effectively manage mobile workforce teams and improve the bottom line.



## Benefits

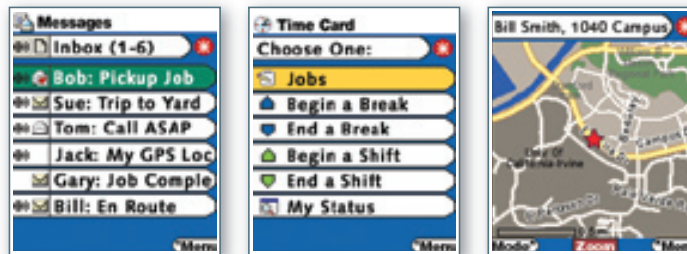
- Increase revenue by accomplishing more work per employee per day.
- Decrease cost of operations by using resources more efficiently.
- Increase the productivity of the mobile team by making useful tools and information available to them in the field.
- Streamline operations and increase overall efficiency.
- Maintain real-time knowledge of the mobile team with access to their most recent location information and stops.
- Detailed reports enable better business decisions.



## Features

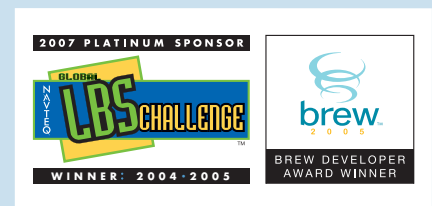
- Proven security, robustness, and ease of use makes it easy to deploy and manage.
- Hassle-free design runs in the background of the users' mobile phones.
- Web console makes it possible to monitor and manage the mobile team from anywhere.
- High-end mapping features pinpoint team members' locations via the web or on mobile phones.
- Geo-alerts notify users when a team member arrives at or leaves a set of designated places. Works with the users' imported customer locations, contacts, or places.
- Continuous tracking records all stops with locations and stop duration.
- Text messaging lets users send and receive communications—phone-to-phone or web-to-phone—and store the time each message was delivered and read.
- Time card link with mobile job log makes it easy to record shifts, jobs, and breaks in real time.

## Empower your mobile workforce with AtlasLink



### What's Needed to Start

- NIM-certified GPS-enabled mobile phone.
- Voice or data plan.
- AtlasLink account and service plan.
- AtlasLink mobile application installed on your mobile phone. AtlasLink is downloaded over the air from the users' wireless carrier.
- Web browser access.



**For more information, contact Networks In Motion, Inc.**

6A Liberty, 2nd Floor, Aliso Viejo, CA 92656 [www.NetworksInMotion.com](http://www.NetworksInMotion.com)  
+1.877.638.8873 +1.949.453.3800 [sales@NetworksInMotion.com](mailto:sales@NetworksInMotion.com)